

Terms of Reference – Mississauga Health Promotion Committee September 2006

Background

Following a community consultation held in May 2006 for service providers, the East Mississauga Community Health Centre, in partnership with agencies servicing the area, developed the Mississauga Health Promotion Committee to address the numerous social determinants of health. Participating members are committed to stimulating action and awareness to build a healthier environment for optimum health.

Our Beliefs

1. Everyone has the right to live in a healthy community.
2. The community has the responsibility to address the needs of the individual within the community and to provide the prerequisites for health.
3. The community, itself, through the interaction of individuals and groups can best determine its own needs.
4. The individual, the Community Health Centre and the community at large are partners sharing the responsibility for meeting these needs.
5. We view the individual as a whole person in terms of cultural background and economic circumstances.
6. We recognize each person in relation to his/her social and physical environment. We believe that promoting health involves improving the environment.
7. The promotion of a healthy community includes: The provision of service, education, preventive measures, client participation, advocacy and community development.
8. Some members of the community have greater needs and therefore require more of our services, advocacy and support. By empowering these members, the whole community is strengthened.

Purpose

- ✓ To advocate for culturally-sensitive, cost-effective, novel, and holistic approaches to health
- ✓ To aid in developing and providing training on holistic approaches to health
- ✓ To create access to a network of interdisciplinary health care providers that represent both the population of East Mississauga and the relevant issues affecting community health
- ✓ To develop sub-committees to address broad determinants of health
- ✓ To encourage inclusion of people representing population of East Mississauga
- ✓ To raise awareness and education of health promotion as an extension of medical and clinical care
- ✓ To centralize and coordinate health resources for effective dissemination/use/sharing

- ✓ To stimulate and explore partnerships with like-minded agencies/organizations who serve East Mississauga
- ✓ To provide a unique collaborative in Peel that champions the provision of holistic health care and interdisciplinary health systems

Accountability

All members are accountable to the East Mississauga CHC Coordinating Council, and the LAMP Board of Directors. Please see attached organizational chart, and description of other existing committees at the East Mississauga CHC.

Membership

Membership is through invitation and agreement of the committee.

Members are committed to the following expectations:

- ✓ Represent agencies or programs serving the East Mississauga area (boundaries are as follows: Matheson Blvd to the North, Etobicoke Creek to the East, Lakeshore to the South, and Hurontario Street to the West)
- ✓ Commit to monthly meetings and active participation (anticipating bi-monthly meetings after year one)
- ✓ Assume responsibility to update themselves and contribute to on-going discussions of current issues. If unable to attend, substitutes from member agencies are welcomed.
- ✓ Actively representing diverse populations and issues
- ✓ Commit to fostering an interdisciplinary and diverse membership
- ✓ Auxiliary members are welcome and will receive monthly minutes, with the onus on them to read through and contribute to an exchange of expertise
- ✓ Special invite/advisory participants may attend for subcommittees or to provide expertise on issues that are broad or beyond our scope

Meetings

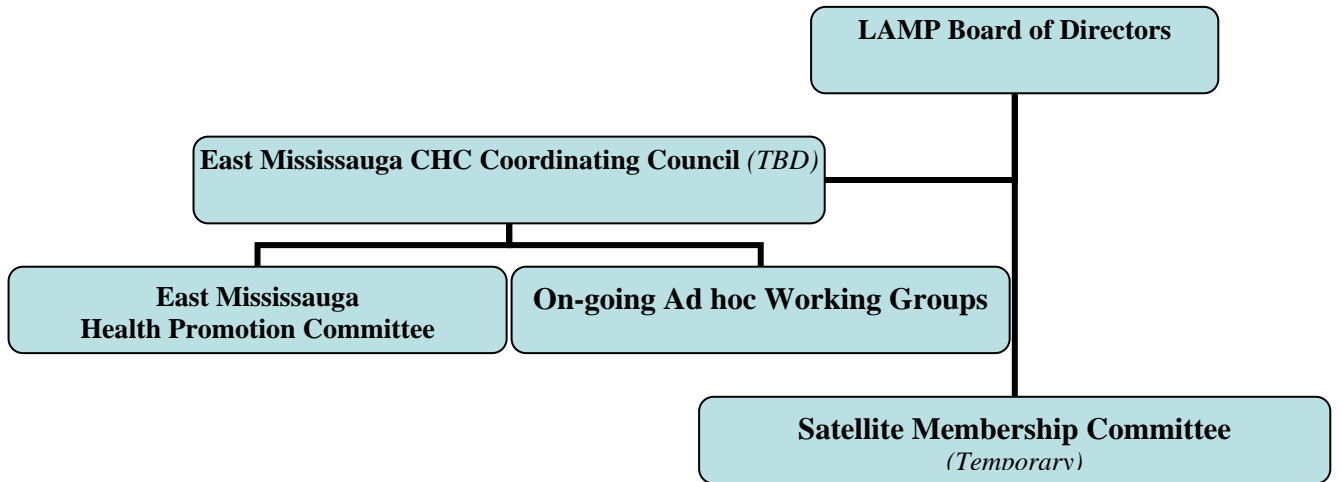
- Time: Monthly meetings from 10am-noon, 4th Thursday of each month.
- Chair: Nicole Ghanie-Opondo, Health Promoter and Community Relations Officer at the East Mississauga CHC, will chair meetings for the first year.
- Tasks: Minute taking will rotate through members monthly

I, _____, representing _____
First and Last name Agency/Organization

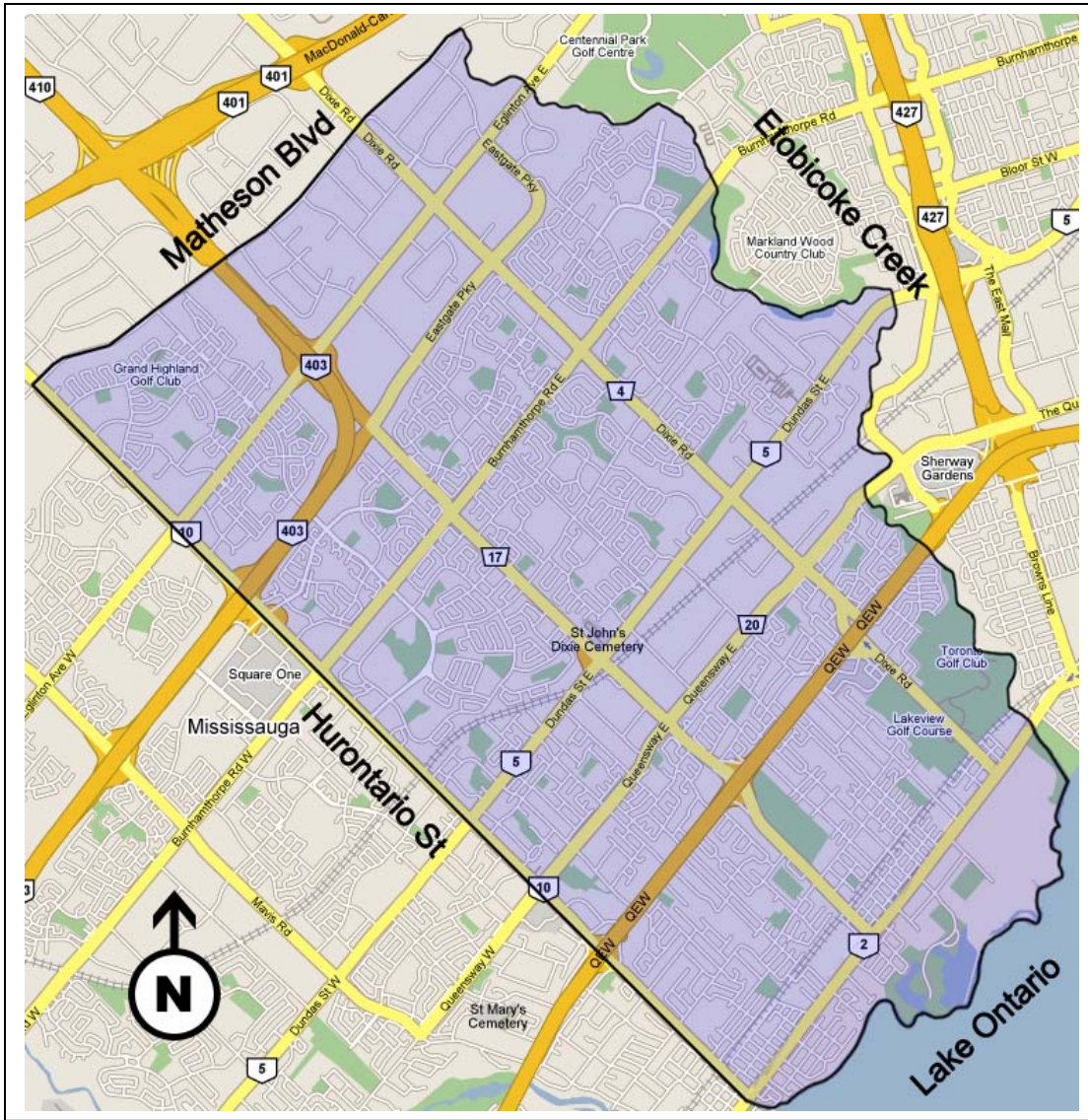
commit to active participation according to the above mentioned terms of reference for the Mississauga Health Promotion Committee.

Please sign and return to the Mississauga Health Promotion Committee Chair.

East Mississauga CHC Organizational Chart



Our Community



The following borders make up our community at the East Mississauga Health Promotion Committee:

- Matheson Blvd to the North
- Etobicoke Creek to the East
- Lake Ontario to the South
- Hurontario to the West